

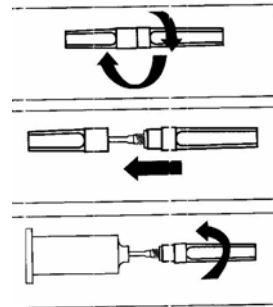
Instructions - Collecting blood for DG29 testing

IMPORTANT

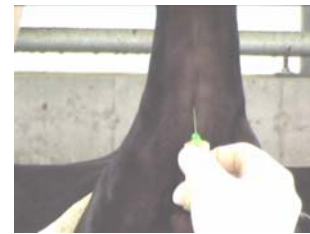
A new needle and blood tube **MUST** be used for each animal. Needle holders, can be re-used. Obtain appropriate medical attention in the event of any biological exposure through a puncture injury, since samples may transmit infectious diseases. Keep away from children.

If you are not familiar with using the vacutainer system for collecting blood, please read the following instructions. This kit contains a vacutainer blood collection system consisting of:

- a. Blood tubes
- b. Needles
- c. Clear plastic needle holder
- d. Alcohol pads



2. To assemble the needle and holder, remove clear plastic cover from end of needle by twisting. The end of the needle is covered by a grey rubber substance which can remain in place. Place end of needle through the small, threaded opening of needle holder and twist to lock in place. The colour covered end of the needle should be outside the holder as shown in the picture.
3. Restrain the animal and lift the tail. Locate the vein under the tail and with an alcohol pad disinfect a blood collection site.
4. Remove the colour plastic cover from needle.
5. Puncture the animal's skin and tail vein with the exposed needle. With the needle in the vein, push the blood tube on to the end of the needle inside the holder with the heel of your hand.



6. Blood should flow into the tube if the needle has punctured the vein. Fill the tube until blood stops flowing near the top of the tube. At least $\frac{1}{2}$ cm of blood must be collected in a plastic blood collection tube to do the test.
7. If it is necessary to remove the needle from the animal to re-position, you must remove the blood tube from the end of the needle in the holder. If not, the blood tube will lose vacuum making it impossible to draw blood into the tube, and a new one should be used.
8. After collection remove the needle from the animal and dispose of it adequately by adding covers and discard in a biohazard container approved for their disposal.
9. Label tube immediately with animal's identification number.